

The Human Computer

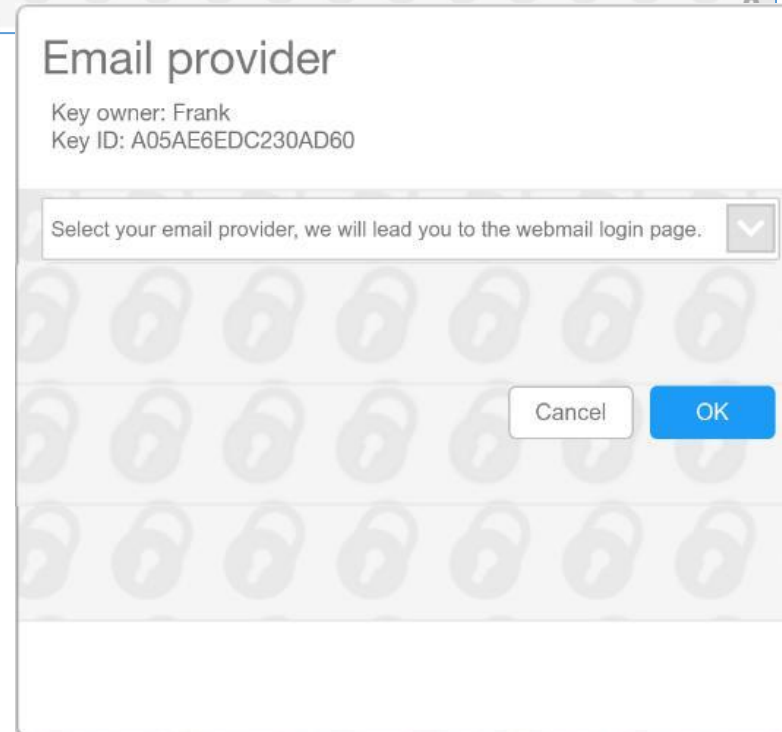
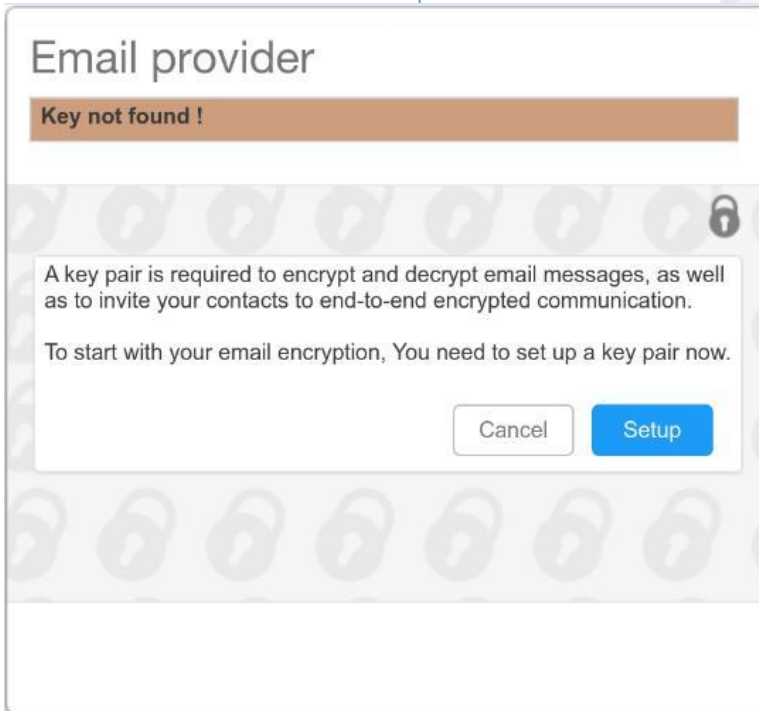
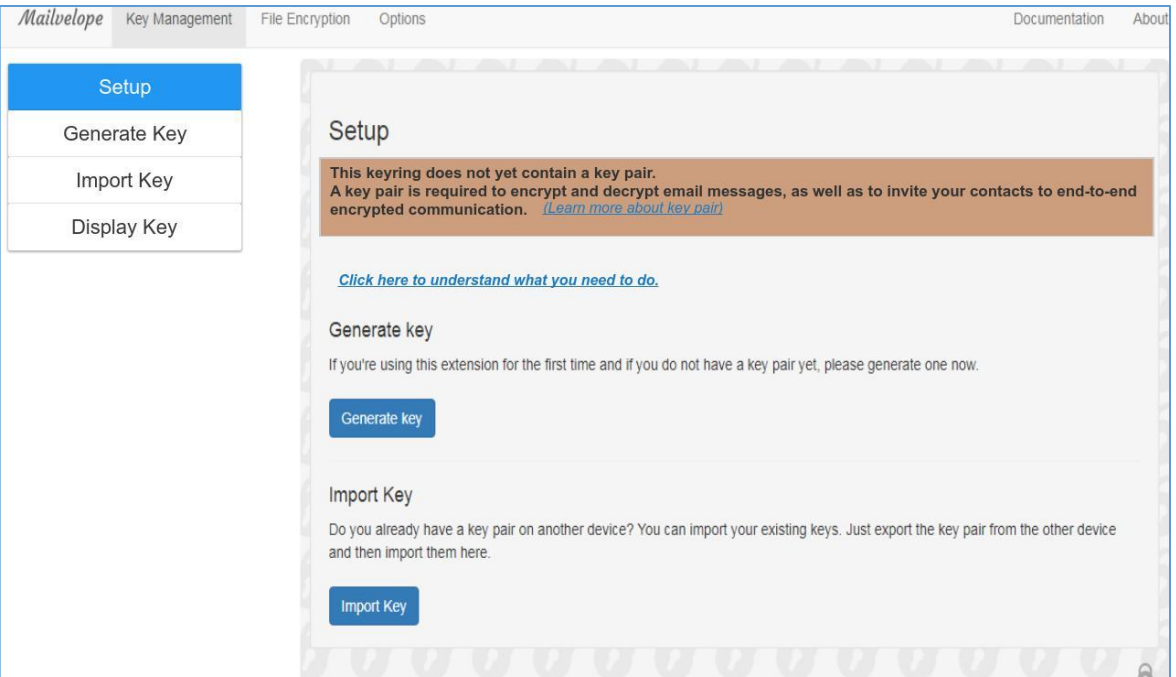
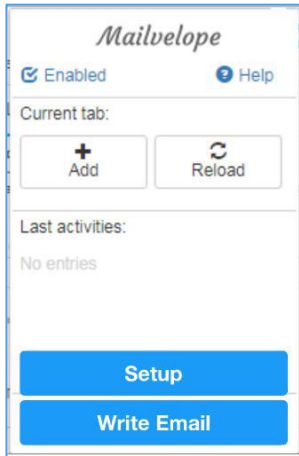
The Human Computer

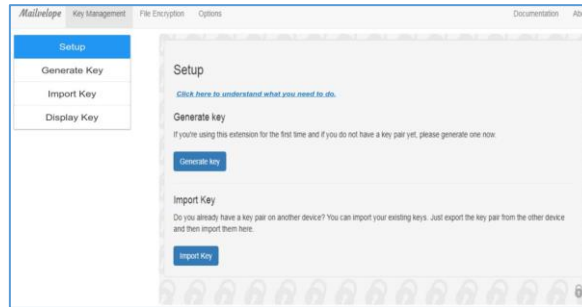
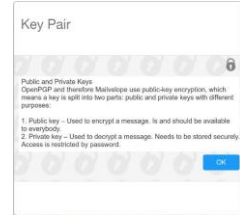
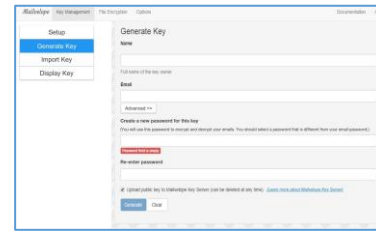
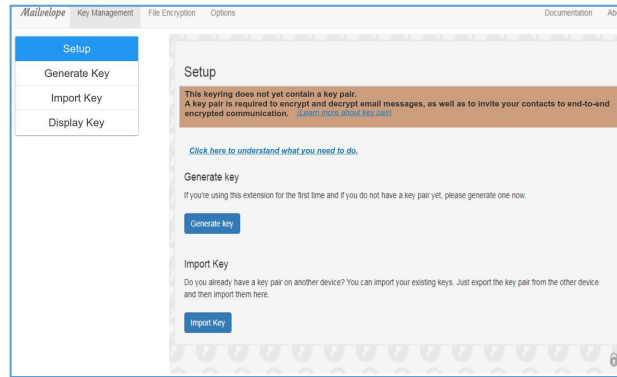
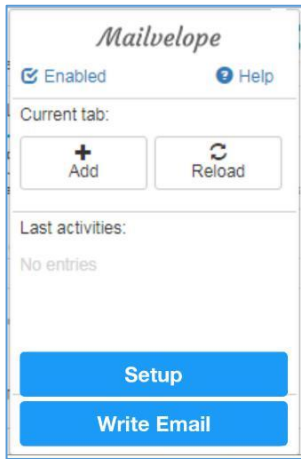
- Formalized method of doing Paper Prototype testing
 - One person is the “computer” and moves the paper prototypes around in response to the participant’s actions
 - One person is the “facilitator” who is in charge of making sure the study runs smoothly
- When to use:
 - When you need more formal or in-depth feedback than just showing someone your designs

The following is from a Masters student project on improving the Mailvelope plugin on Chrome.

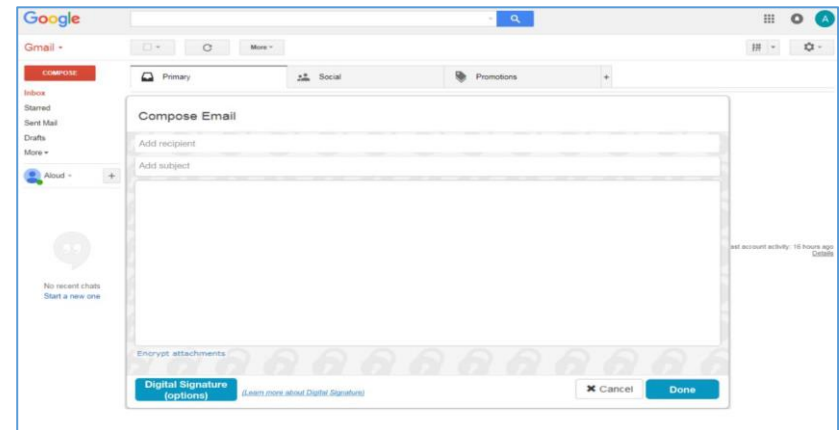
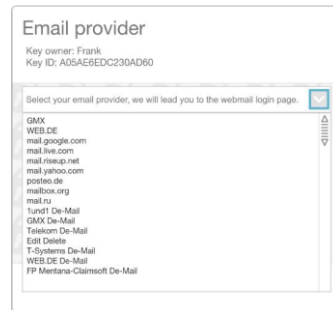
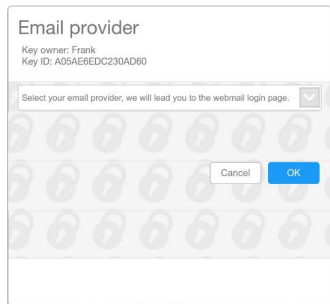
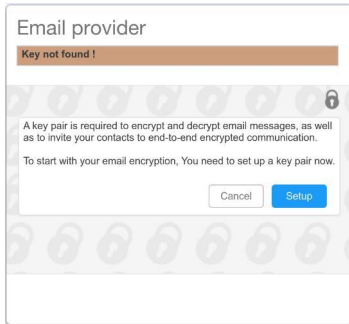
First we created mock-ups of the various screens for our new design

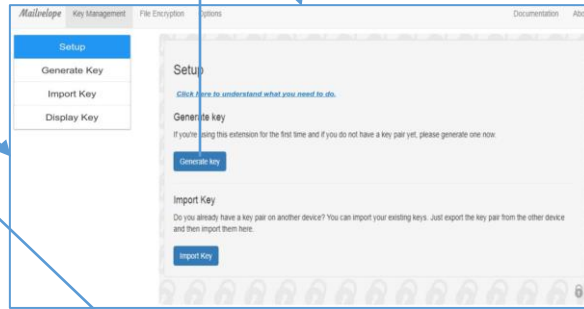
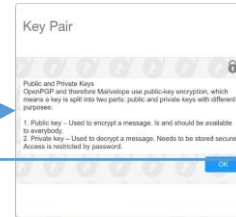
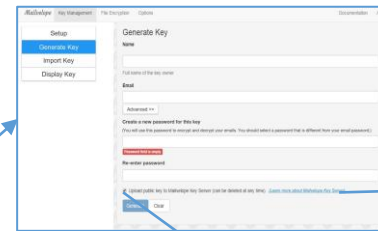
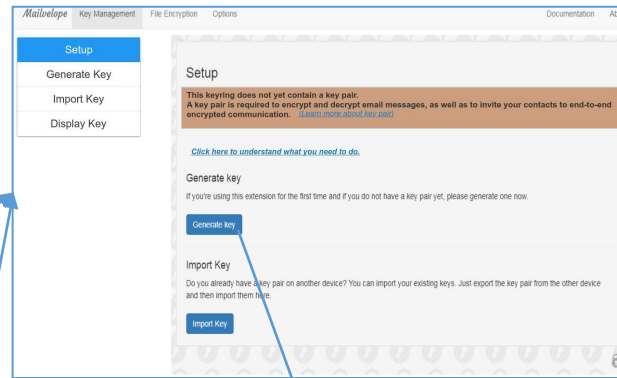
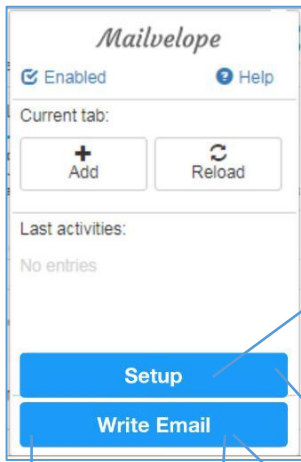
Here are a couple of the screens we mocked up.



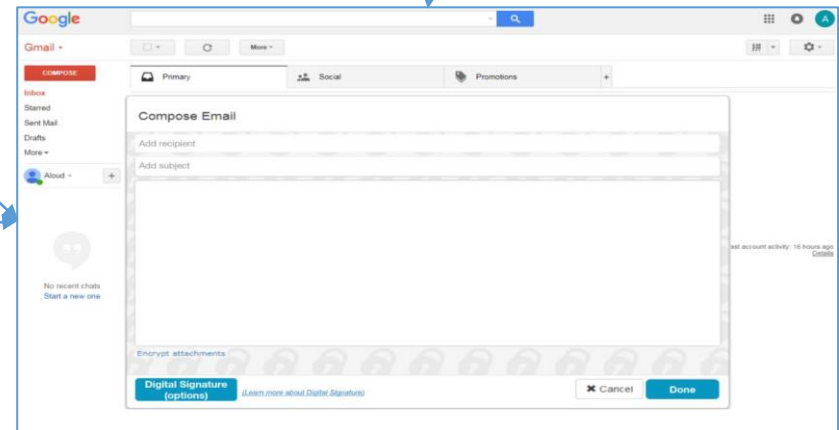
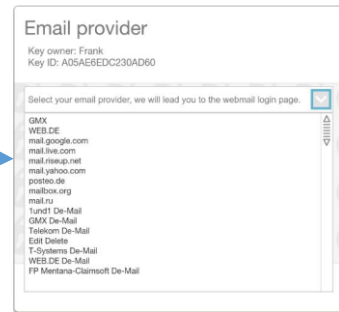
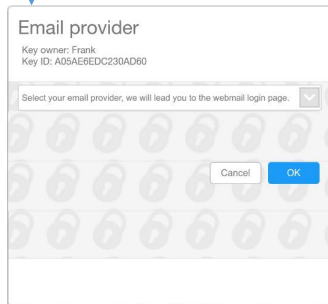
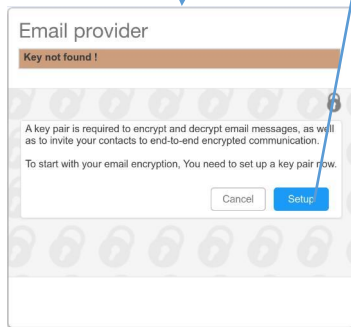


Here is what it looks like for all the screens mocked up, including different versions of the same screen before/after input, and several pop-ups.





The arrows are the transitions between different screens.
Note that not all transitions are mocked up.



Mailvelope

Enabled Help

Current tab:

+ Add Reload

Last activities:

No entries

Setup

Write Email

Mailvelope Key Management File Encryption Options Documentation About

Setup

Generate Key

Import Key

Display Key

Setup

This keyring does not yet contain a key pair.
A key pair is required to encrypt and decrypt email messages, as well as to invite your contacts to end-to-end encrypted communication. [Learn more about key pairs](#)

[Click here to understand what you need to do.](#)

Generate key

If you're using this extension for the first time and if you do not have a key pair yet, please generate one now.

Generate Key

Import Key

Do you already have a key pair on another device? You can import your existing keys. Just export the key pair from the other device and then import them here.

Import Key

Mailvelope Key Management File Encryption Options Documentation About

Generate Key

Name

Full name of the key owner

Email

Advanced

Create a new password for the key (You will not be prompted to encrypt and decrypt your emails. You should select a password that is different from your email password).

No other password

Import public key to Mailvelope key (Even just for backup and use. See [docs.mailvelope.com/faq/faq-key-pair](#))

Generate Key

Key Pair

Public and Private Keys

CloudPDF and Mailvelope use public-key encryption, which means a key is split into two parts: public and private keys with different purposes:

1. Public key - Used to encrypt a message. It should be available to everybody.
2. Private key - Used to decrypt a message. Needs to be stored securely. Access is restricted by password.

OK

Mailvelope Key Management File Encryption Options Documentation About

Generate Key

Name

Full name of the key owner

Email

Advanced

Create a new password for the key (You will not be prompted to encrypt and decrypt your emails. You should select a password that is different from your email password).

No other password

Import public key to Mailvelope key (Even just for backup and use. See [docs.mailvelope.com/faq/faq-key-pair](#))

Generate Key

Mailvelope Key Management File Encryption Options Documentation About

Setup

Generate Key

Import Key

Display Key

Setup

[Click here to understand what you need to do.](#)

Generate key

If you're using this extension for the first time and if you do not have a key pair yet, please generate one now.

Generate Key

Import Key

Do you already have a key pair on another device? You can import your existing keys. Just export the key pair from the other device and then import them here.

Import Key

The "computer" uses these transitions to know which screen follows from each interaction.

Email provider

Key not found!

A key pair is required to encrypt and decrypt email messages, as well as to invite your contacts to end-to-end encrypted communication.

To start with your email encryption, You need to set up a key pair now.

Cancel **Setup**

Email provider

Key owner: Frank
Key ID: A05AE6EDC230AD60

Select your email provider, we will lead you to the webmail login page.

Cancel **OK**

Email provider

Key owner: Frank
Key ID: A05AE6EDC230AD60

Select your email provider, we will lead you to the webmail login page.

- GMX
- WEB.DE
- mail.google.com
- mail.live.com
- mail.riseup.net
- mail.yahoo.com
- postee.de
- mailbox.org
- mail.ru
- Tund1 De-Mail
- GMX De-Mail
- Telecom De-Mail
- Edi Delete
- T-Systems De-Mail
- WEB.DE De-Mail
- FP Meritana-Claimsot De-Mail

Google

Gmail

Primary Social Promotions

Compose Email

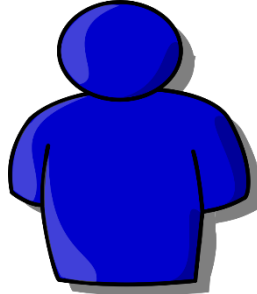
Add recipient

Add subject

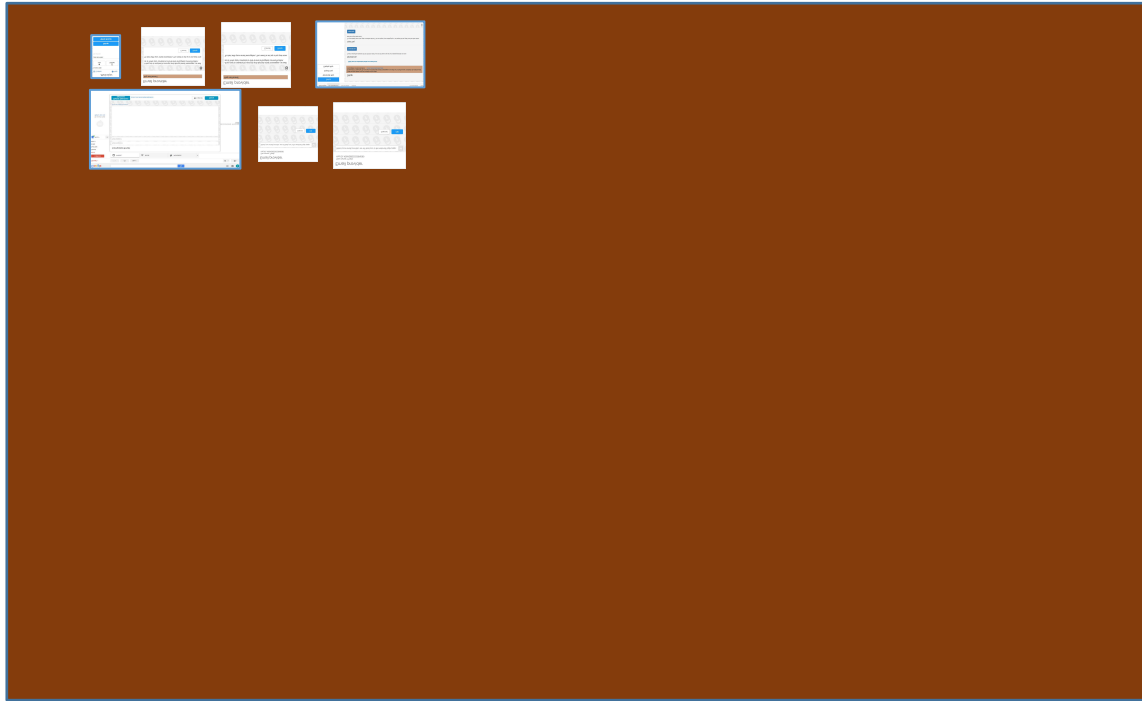
Encrypt attachments

Digital Signature (options) [Learn more about Digital Signatures](#)

Cancel **Done**



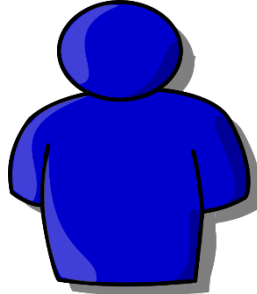
Computer



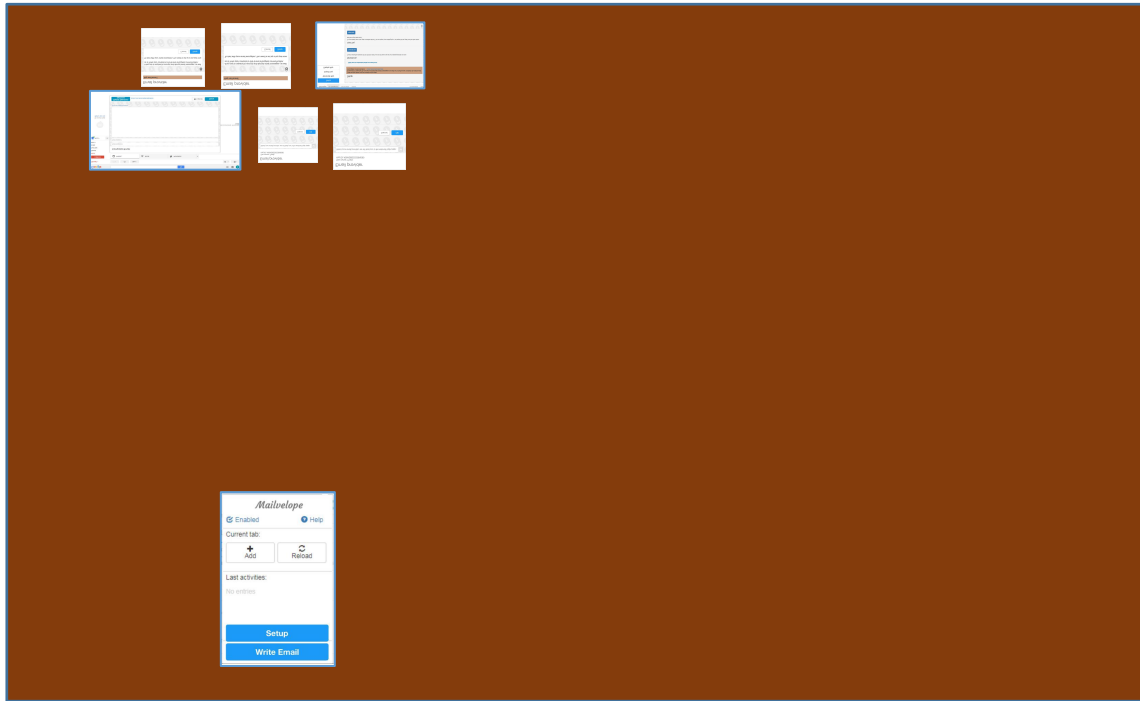
Tester



Facilitator



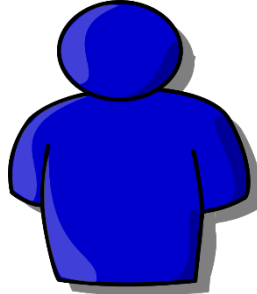
Computer



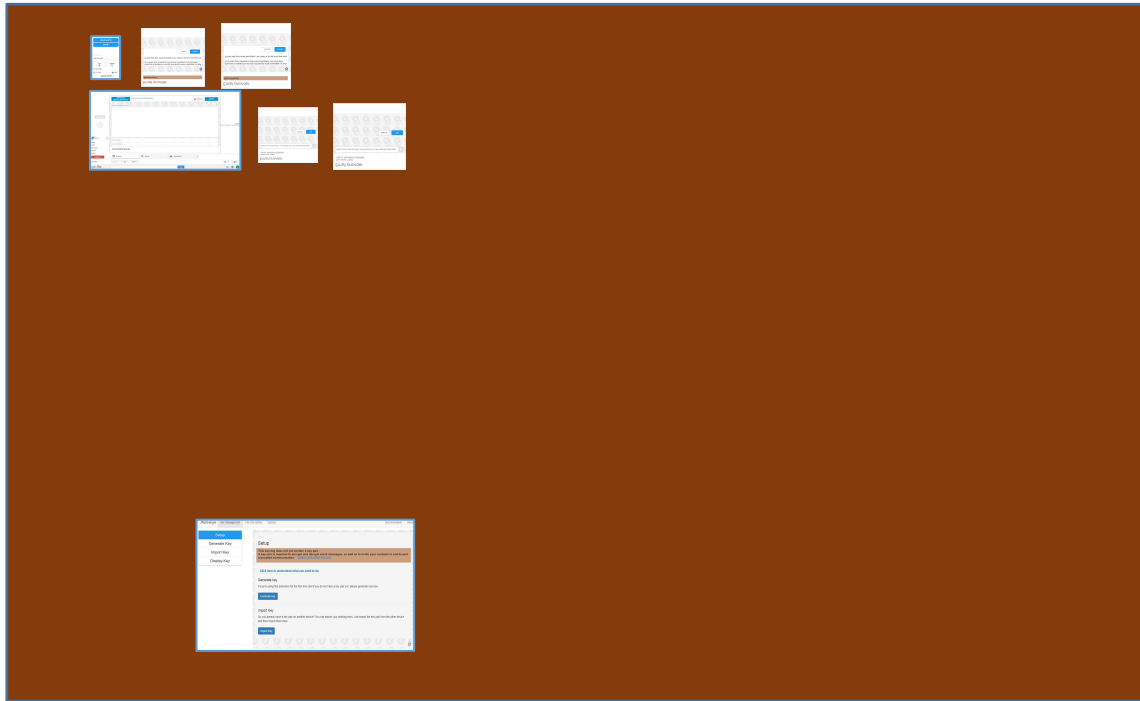
Tester



Facilitator



Computer



Tester



Facilitator

Questions?