

IEC 29119 Overview

BS ISO/IEC/IEEE 29119-1:2022

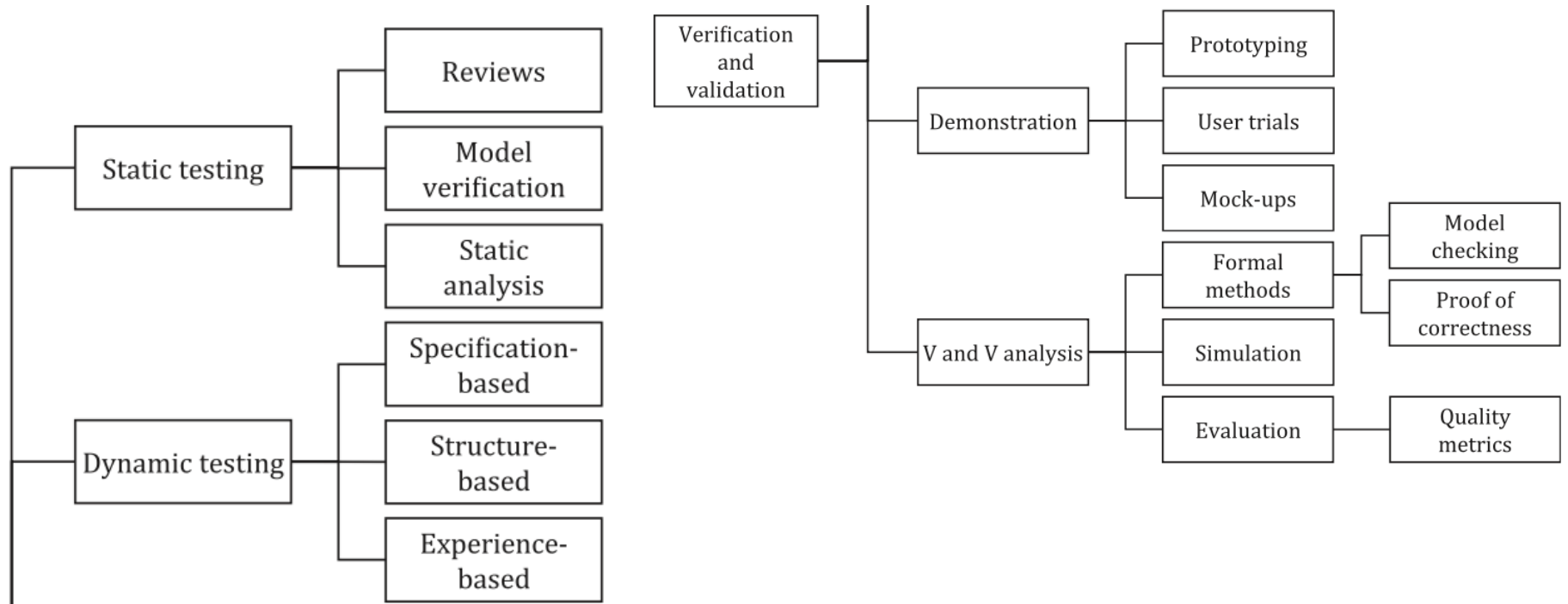


BSI Standards Publication

Software and systems engineering — Software testing

Part 1: General concepts

V&V methods or practices



Test approach choices

Levels of testing

Unit testing
Integration testing
System testing
System integration testing
Acceptance testing

- User acceptance testing
- Operational acceptance testing
- Factory acceptance testing
- Alpha testing
- Beta testing
- Production verification testing

Test practices

Model-based testing
Scripted testing
Exploratory testing
Experience-based testing
Manual testing
A/B testing
Back-to-back testing
Mathematical-based testing
Fuzz testing
Keyword-driven testing
Automated testing

- Capture-replay driven
- Data-driven

Test approach choices

Types of testing

Functional testing
Accessibility testing
Compatibility testing
Conversion testing
Disaster/recovery testing
Installability testing
Interoperability testing
Localization testing
Maintainability testing
Performance-related testing

- Performance
- Load
- Stress
- Capacity
- Recovery

Portability testing
Procedure testing
Reliability testing
Security testing
Usability testing

Static testing

Reviews (ISO/IEC 20246)
Static analysis
Model verification

Test approach choices

Test design techniques / measures

Specification-based:

- Equivalence partitioning
- Classification tree method
- Boundary value analysis
- Syntax testing
- Combinatorial testing
 - All combinations
 - Pairwise
 - Each choice
 - Base choice
- Decision table testing
- Cause-effect graphing
- State transition testing
- Scenario testing
- Use case testing
- Random testing
- Metamorphic testing
- Requirements-based testing

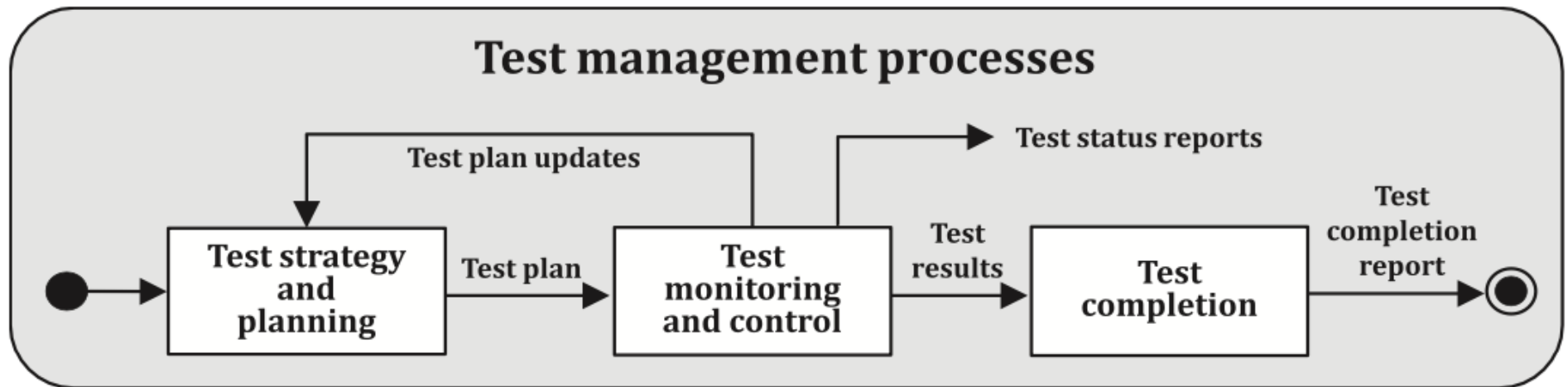
Structure-based:

- Statement testing
- Branch testing
- Decision testing
- Branch condition testing
- Branch condition combination testing
- MC/DC testing
- Data flow testing
 - All-definitions testing
 - All-C-uses testing
 - All-P-uses testing
 - All-uses testing
 - All-DU-paths testing

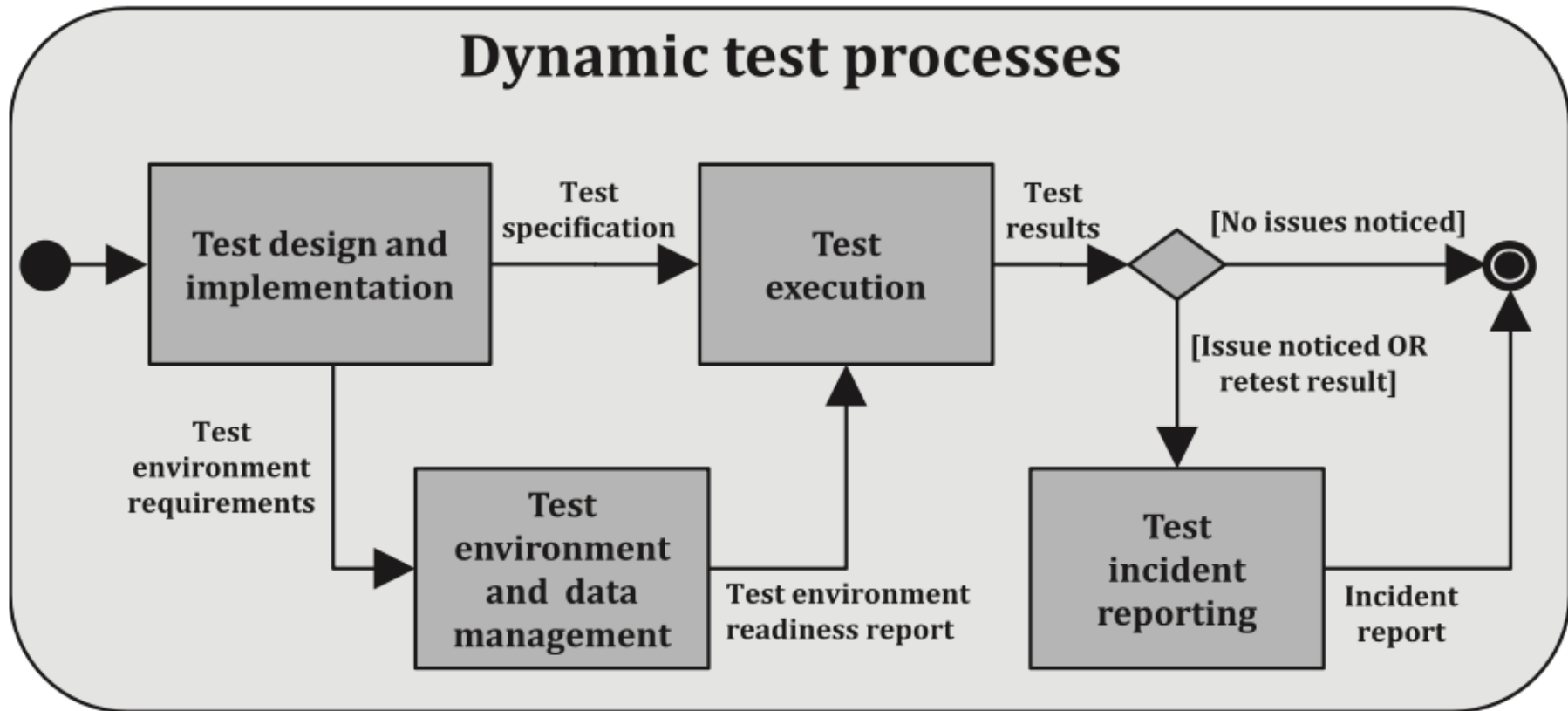
Experience-based:

- Error guessing

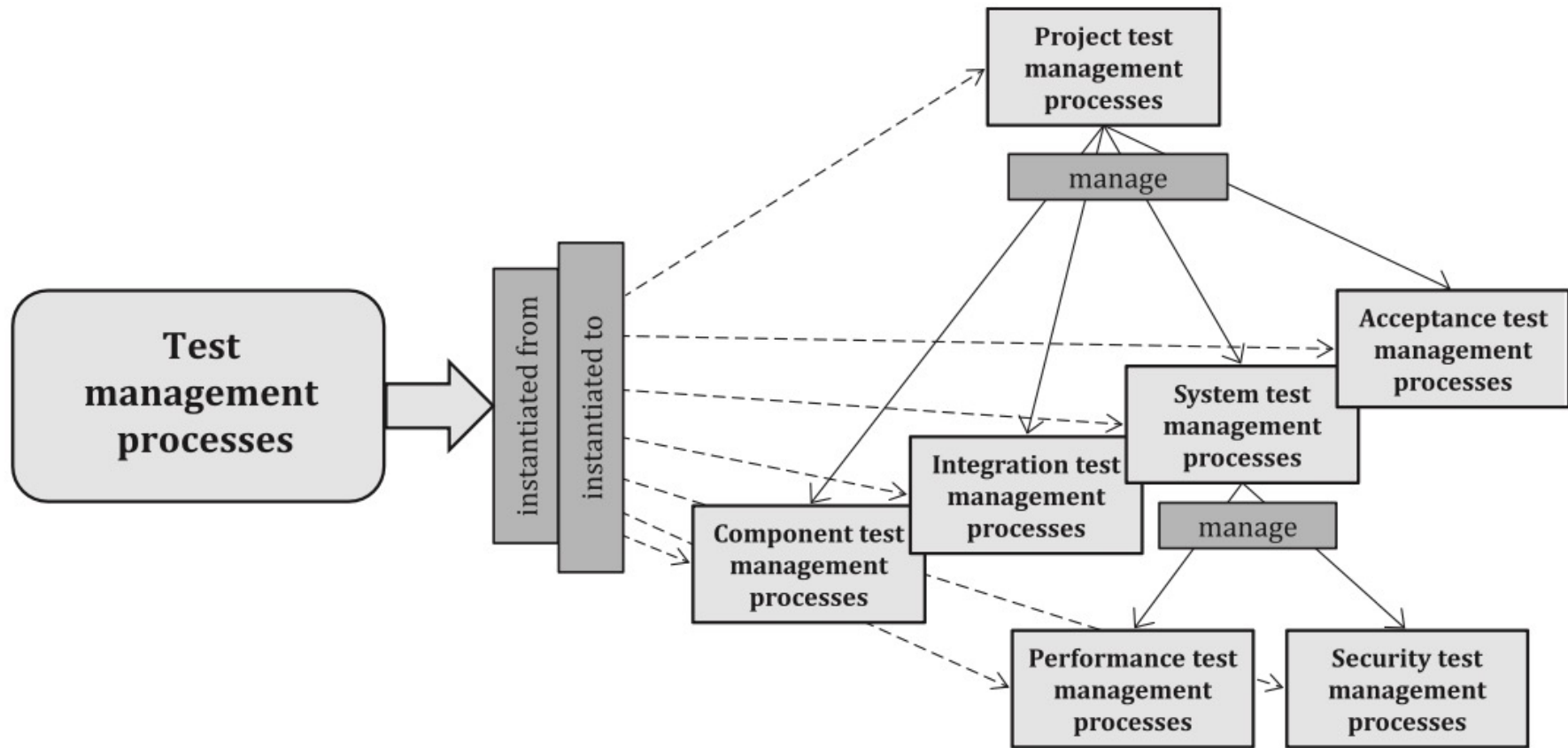
Managing Tests



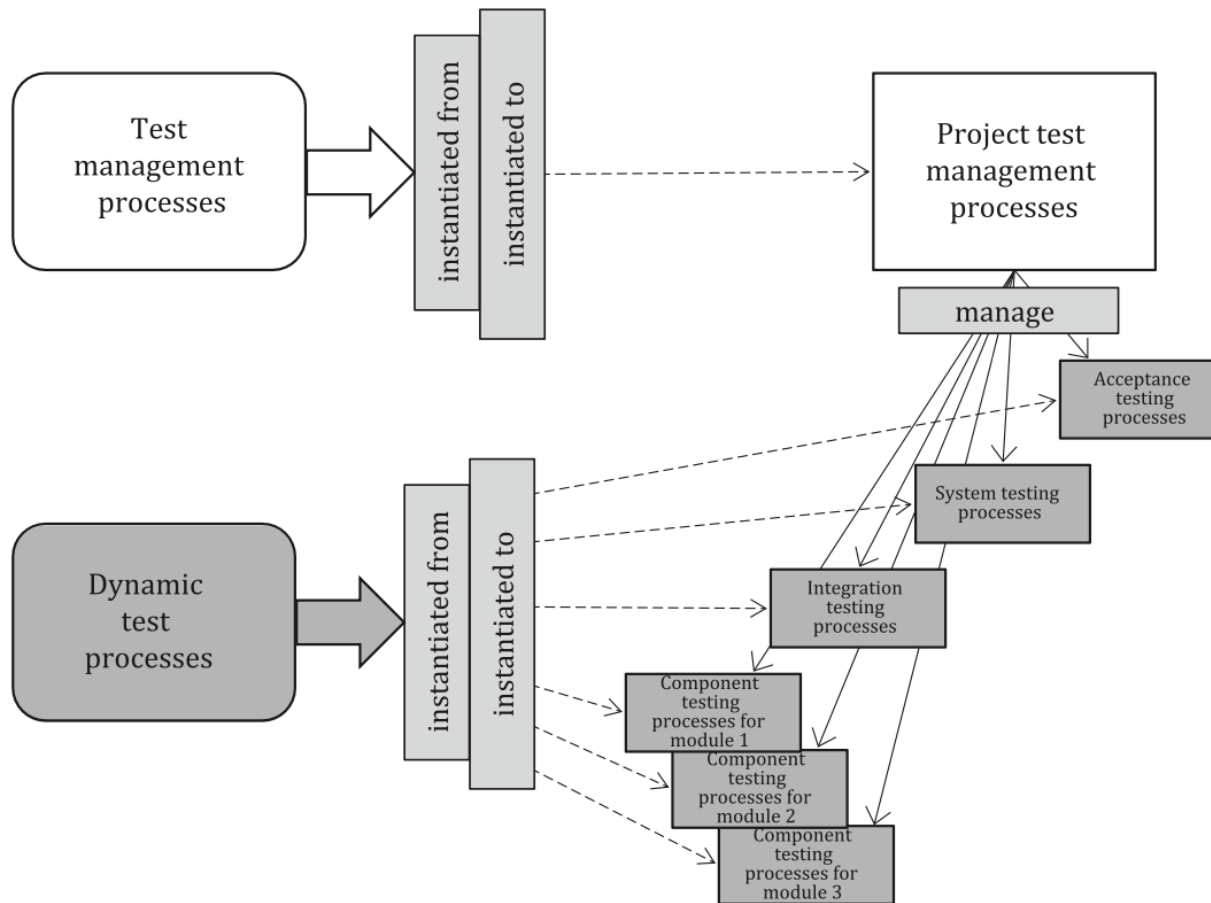
Dynamic Testing



Test Management



Multiple Processes



Test model

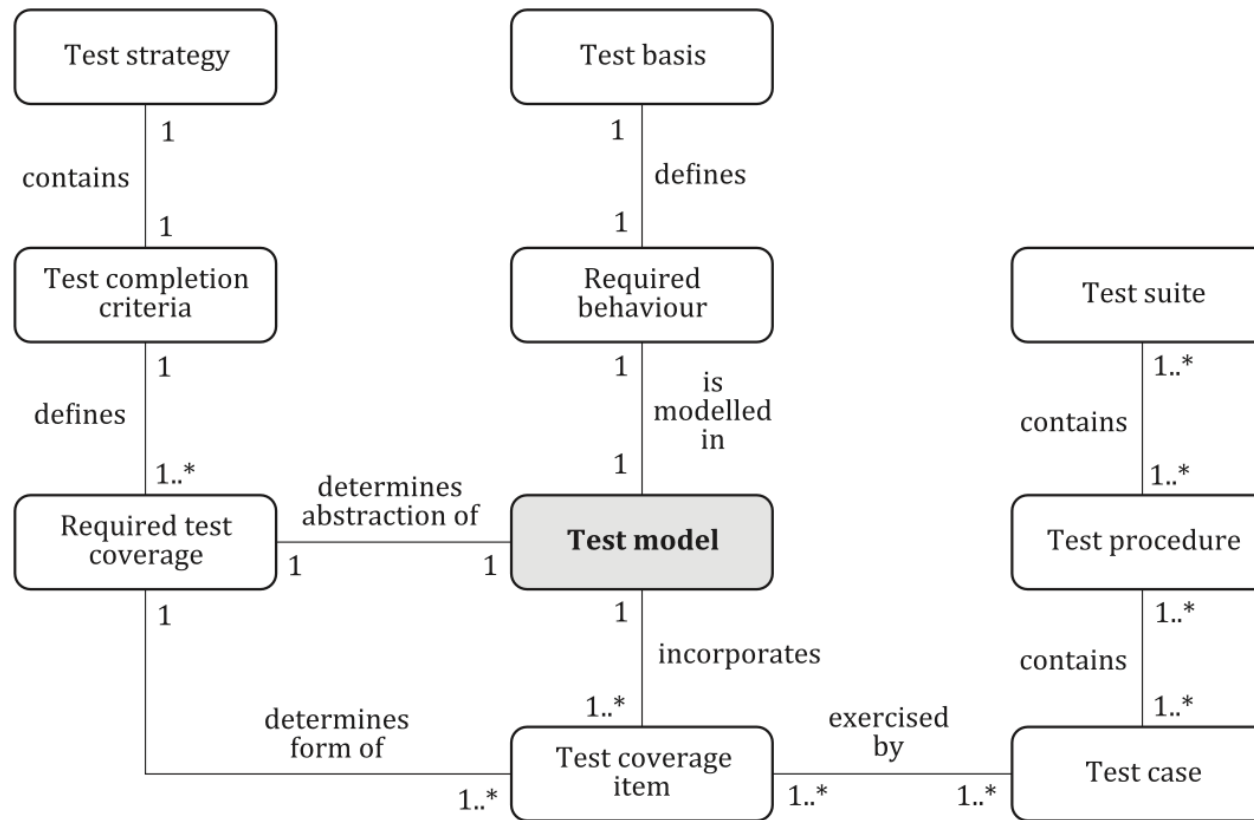


Figure 8 — Test model in perspective

Testing in a project

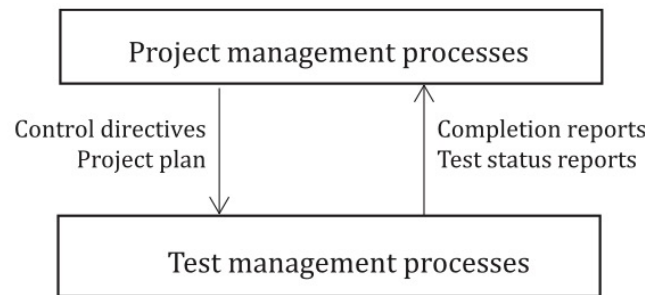


Figure 9 — Relationship between the overall project and the testing